

THANK YOU!
Breakfast Sponsor



CraneTechInc.

Crane and Rigging
Sign-In Form





CRANE, RIGGING & LIFTING COMMITTEE



CHAIRPERSON: DAVID WOLF, LYONDELLBASELL

Committee Mission Statement

To promote safe and effective crane, rigging, and lifting industry-related activities in the refining, petrochemical, oil and gas, and construction industries in the Gulf Coast, greater Houston Texas area.



CRANE, RIGGING & LIFTING COMMITTEE

OFFICERS

VICE CHAIR: BILLY EVERETT, FAGIOLI



VICE CHAIR: DOUG WRIGHT, BARNHART CRANE, AND RIGGING





CRANE, RIGGING & LIFTING COMMITTEE

VOLUNTEERS

COMMUNICATION: RYLEE JENKINS

AUSTIN HILL, BARNHART CRANE & RIGGING

SECRETARY: DARINEE SUTTAGIT

ANTI-TRUST GUIDELINES FOR CONDUCTING MEETINGS

IBR appreciates your willingness to be an important part of this organization and the services provided to our industry.

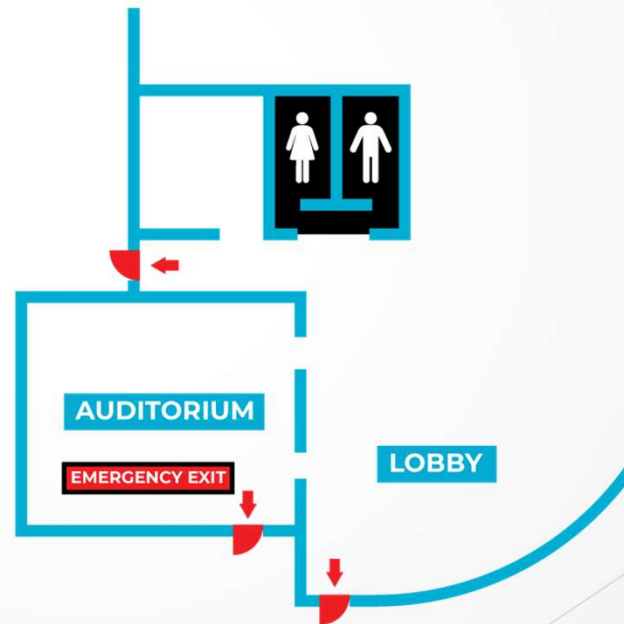
The following guidelines shall be followed in conducting meetings of IBR. This is not an exhaustive list of every possible subject to be avoided; in the event you have doubts about the propriety of any matter to be discussed in a meeting, our legal counsel is available for consultation. Generally, the anti-trust laws proscribe unlawful combinations or agreements. Sometimes “agreements” may be inferred from conduct. IBR wants to avoid even the appearance of impropriety, and this is the spirit of these guidelines.

- ❖ Do not discuss the prices of goods or services of any particular company(s).
- ❖ Do not disparage the goods or services of any particular company(s)
- ❖ Do not recommend the selection of any particular company as a supplier or customer
- ❖ Do not urge or counsel that participating companies engage in any concerted activity to accomplish any unlawful purpose, i.e., boycotting any company or coercing a company to take some desired action.
- ❖ Do not discuss matters which may be trade secrets or confidential to any company, i.e. don't engage in “off the record” comments or state matters “not to be repeated out of this room”.
- ❖ Do not propose secret or “rump” sessions after the official meeting is adjourned to discuss matters which cannot lawfully be discussed at the official meeting.
- ❖ Do not recommend or sponsor the gathering of statistical data, the publishing of standards, or doing joint research without advance written approval of the Operating Committee of IBR.
- ❖ Industry Business Roundtable's purpose is to educate participating companies, so every company represented will be better informed and can make its own individual decisions. IBR members are not required to adopt the IBR recommendations or policies.

Thank you in advance for adhering to these guidelines.



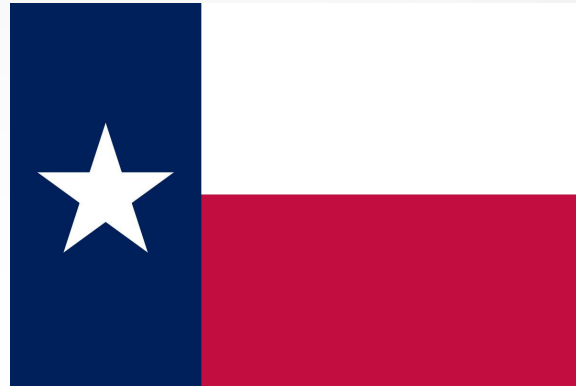
Emergency Exits and Restrooms





Pledge of Allegiance

I pledge allegiance to the flag of the United States of America and to the Republic, for which it stands. One Nation, under God, Indivisible, With Liberty and justice for all.



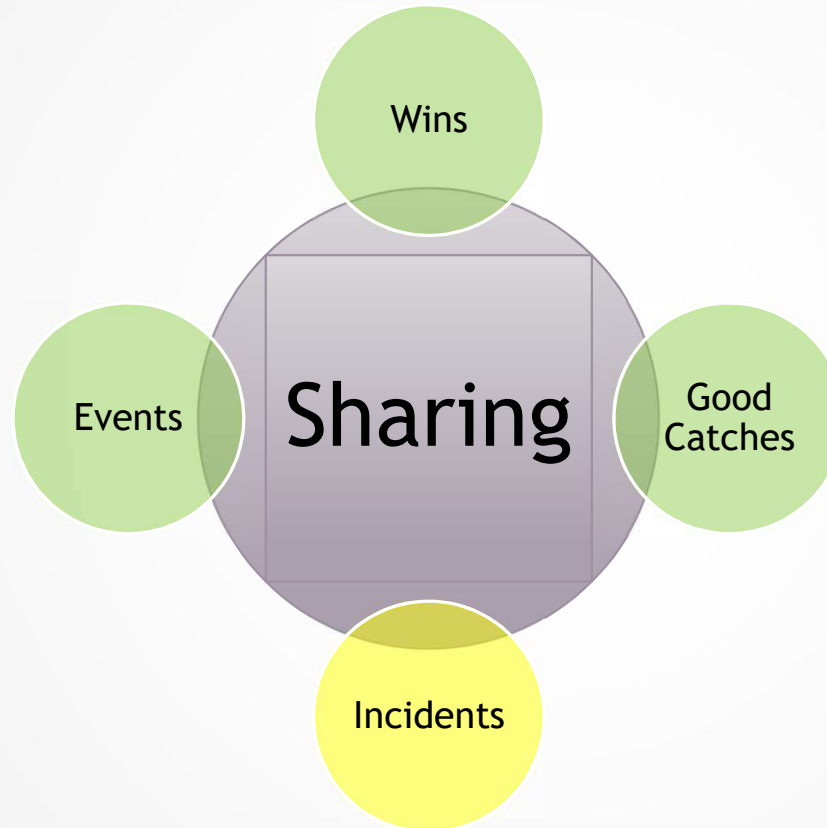
Texas Pledge

Honor the Texas Flag; I pledge allegiance to thee, Texas, one state under God, one and indivisible.

New Attendee Introductions



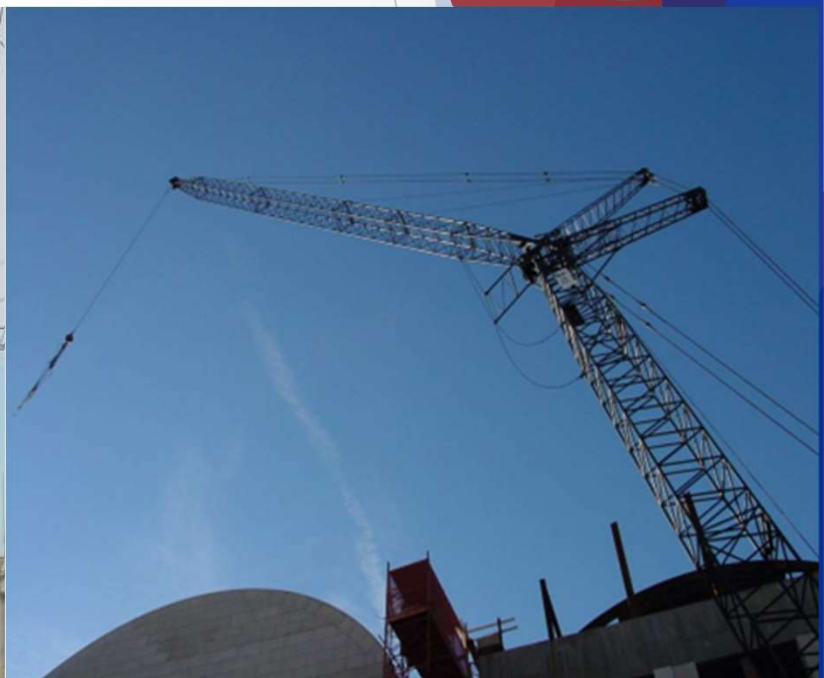
Best Practice Sharing/Industry Hot Topics



Safety Council Report



OSHA update



OCCUPATIONAL SAFETY & HEALTH ADMINISTRATION

Welcome

CRANE AND RIGGING COMMITTEE MEETING

TOPIC OF DISCUSSION:

MOBILE & OVERHEAD CRANE
INSPECTION & PM REQUIREMENTS



SPEAKER:
Matt Howser

TITLE: Technical Consultant
COMPANY: CraneTech, Inc.



TUESDAY

September, 10th 2024



TIME

8:00AM - 10:00PM



LOCATION

HASC AUDITORIUM: 5213 CENTER STREET
PASADENA, TX, 77505



Mobile & Overhead Crane Inspection & PM Requirements



OSHA 1926.1412 Cranes & Derricks in Construction

- Frequency of Inspections
 - Each Shift –Visual Inspection Must be performed by a competent person, one who is capable of identifying existing and predictable hazards.
 - Monthly – Equipment Must be Inspected in accordance with paragraph (d). Documentation Must be maintained by Employer and retained for a minimum of three months.
 - Annual /Comprehensive – At least every 12 months from anniversary date, the equipment Must be Inspected by a qualified person, one who, by possession of a recognized degree, certificate, or professional standing, or who by extensive knowledge, training, and experience, has successfully demonstrated his/her ability to solve or resolve problems relating to the subject matter, the work, or the project.



- Equipment that has had modifications or additions which affect the safe operation of the equipment - Modifications or additions have been done in accordance with the approval obtained pursuant to § 1926.1434
- Equipment that has had a repair or adjustment that relates to safe operation - The qualified person must determine if the repair/adjustment meets manufacturer equipment criteria.
- Upon completion of assembly, the equipment must be inspected by a qualified person to assure that it is configured in accordance with manufacturer equipment criteria.
- A competent person must begin a visual inspection prior to each shift the equipment is used, which must be completed before or during that shift. The inspection must consist of observation of wire ropes (running and standing) that are likely to be in use during the shift for apparent deficiencies



OSHA 1910.179(j) Overhead & Gantry Cranes

- Inspection procedure for cranes in regular service is divided into two general classifications based upon the intervals at which inspection should be performed. The intervals in turn are dependent upon the nature of the critical components of the crane and the degree of their exposure to wear, deterioration, or malfunction. The two general classifications are herein designated as "frequent" and "periodic" with respective intervals between inspections as defined below:
 - 1910.179(j)(1)(ii)(a)
 - Frequent inspection - Daily to monthly intervals.
 - 1910.179(j)(1)(ii)(b)
 - Periodic inspection - 1 to 12-month intervals.



- **1910.179(j)(2) Frequent inspection**

The following items shall be inspected for defects at intervals as defined in paragraph (j)(1)(ii) of this section or as specifically indicated, including observation during operation for any defects which might appear between regular inspections. All deficiencies such as listed shall be carefully examined and determination made as to whether they constitute a safety hazard

- **Frequent - Daily Requirements - Pre-Shift**

- All functional operating mechanisms for maladjustment interfering with proper operation.
- Deterioration or leakage in lines, tanks, valves, drain pumps, and other parts of air or hydraulic systems.



- Hooks with deformation or cracks. Visual inspection daily.
- Hoist chains, including end connections, for excessive wear, twist, distorted links interfering with proper function, or stretch beyond manufacturer's recommendations
- All functional operating mechanisms for excessive wear of components.
- Rope reeving for noncompliance with manufacturer's recommendations.



- **Frequent - Monthly Requirements**

- Frequent Monthly Shall consist of the same requirements listed above under “daily” except for the following:
- Hooks with deformation or cracks - monthly inspection with a certification record which includes the date of inspection, the signature of the person who performed the inspection and the serial number, or other identifier, of the hook inspected.
- Hoist chains, including end connections, for excessive wear, twist, distorted links interfering with proper function, or stretch beyond manufacturer's recommendations. Monthly inspection with a certification record which includes the date of inspection, the signature of the person who performed the inspection and an identifier of the chain which was inspected.



- Running ropes. A thorough inspection of all ropes shall be made at least once a month and a certification record which includes the date of inspection, the signature of the person who performed the inspection and an identifier for the ropes which were inspected shall be kept on file where readily available to appointed personnel. Any deterioration, resulting in appreciable loss of original strength, shall be carefully observed and determination made as to whether further use of the rope would constitute a safety hazard.
- Reduction of rope diameter
- A number of broken outside wires and the degree of distribution or concentration of such broken wires. Wire rope should not be used when it exceeds six breaks in multiple strands in any lay length or three breaks in any single strand in any lay length
- Worn outside wires.
- Corroded or broken wires at end connections.
- Corroded, cracked, bent, worn, or improperly applied end connections.
- Severe kinking, crushing, cutting, or unstranding.



- **Periodic inspection - 1 to 12-month intervals**

- 1910.179(j)(3) Periodic inspection.

Complete inspections of the crane shall be performed at intervals, depending upon its activity, severity of service, and environment, or as specifically indicated below. These inspections shall include the requirements of paragraph (j)(2) of this section and in addition, the following items. Any deficiencies such as listed shall be carefully examined and determination made as to whether they constitute a safety hazard:

- Deformed, cracked, or corroded members. Cracked or worn sheaves and drums. Worn, cracked or distorted parts such as pins, bearings, shafts, gears, rollers, locking and clamping devices. Excessive wear on brake system parts, linings, pawls, and ratchets. Load, wind, and other indicators over their full range, for any significant inaccuracies.



- Gasoline, diesel, electric, or other powerplants for improper performance or noncompliance with applicable safety requirements. Excessive wear of chain drive sprockets and excessive chain stretch. Electrical apparatus, for signs of pitting or any deterioration of controller contactors, limit switches and pushbutton stations.



1910.179(j)(4) Cranes not in regular use.

- A crane which has been idle for a period of 1 month or more, but less than 6 months, shall be given an inspection conforming with requirements of paragraph (j)(2) and paragraph(m)(2) (other ropes) of this section before placing in service.
- A crane which has been idle for a period of over 6 months shall be given a complete inspection conforming with requirements of paragraphs (j)(2) and (3) of this section and paragraph (m)(2) of this section before placing in service.
- Standby cranes shall be inspected at least semi-annually in accordance with requirements of paragraph (j)(2) of this section and paragraph (m)(2) of this section.



1910.179(m)(2) Other Ropes

Other ropes. All rope which has been idle for a period of a month or more due to shutdown or storage of a crane on which it is installed shall be given a thorough inspection before it is used. This inspection shall be for all types of deterioration and shall be performed by an appointed person whose approval shall be required for further use of the rope. A certification record shall be available for inspection which includes the date of inspection, the signature of the person who performed the inspection and an identifier for the rope which was inspected.



- Marking the Rated Load
 - Requires that the rated load be plainly marked on the side of each crane
- Certification Records for Hook and Hoist Chain Inspections
 - Require daily and monthly inspections of hooks and hoist chains, respectively
- Reports or Rated Load Tests
 - employers must make readily available test reports of load-rating tests conducted under paragraph (b)(3) for modified cranes, and for hooks repaired as stated in paragraph (l)(3)(iii)(a) of the Standard.
- Certification Records of Rope Inspections

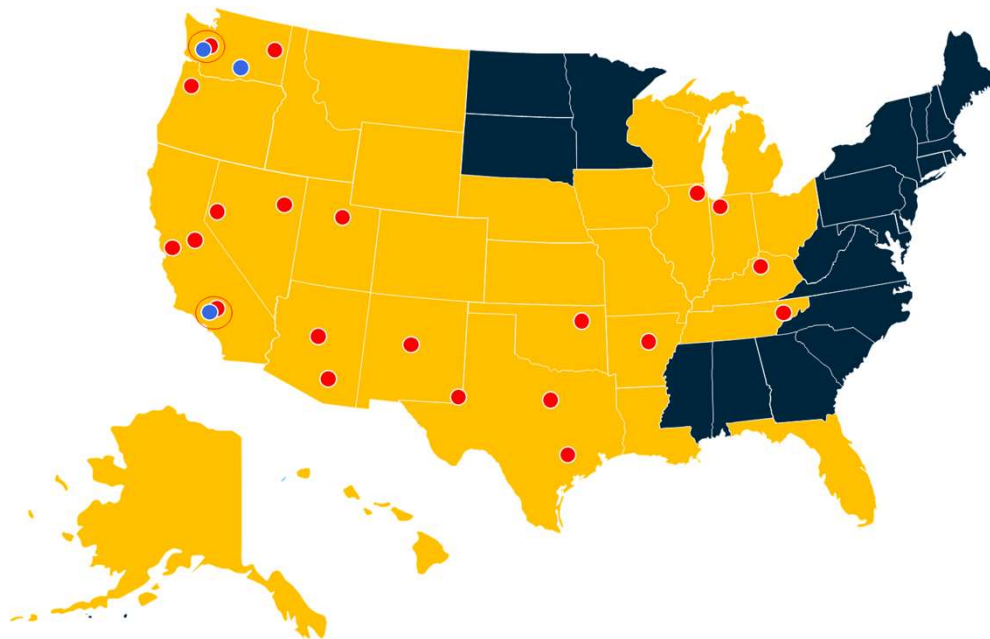


Overhead & Gantry Crane PM Requirements

1910.179(l)(1) Preventive maintenance. A preventive maintenance program based on the crane manufacturer's recommendations shall be established.

Refer to owner's manual and maintenance guide regarding recommended and required frequencies.





● Current Locations

■ Current Steel River Service Area



Questions



Future Topics / Other Business



FIRST CURVE

TODAY'S
way of doing things

SECOND CURVE

TOMORROW'S
way of doing things



GOLF TOURNAMENT

MONDAY
NOVEMBER 11, 2024
SOUTH SHORE HARBOUR COUNTRY CLUB



Save the Date!

Mark Your Calendars: Registration Opens Friday, August 16

Next Meeting October 8, 2024

Innovation Through Collaboration!

